



Well-Being of CT's Children and Families



An Operating Frame for Practice and Policy within the Department of Children and Families

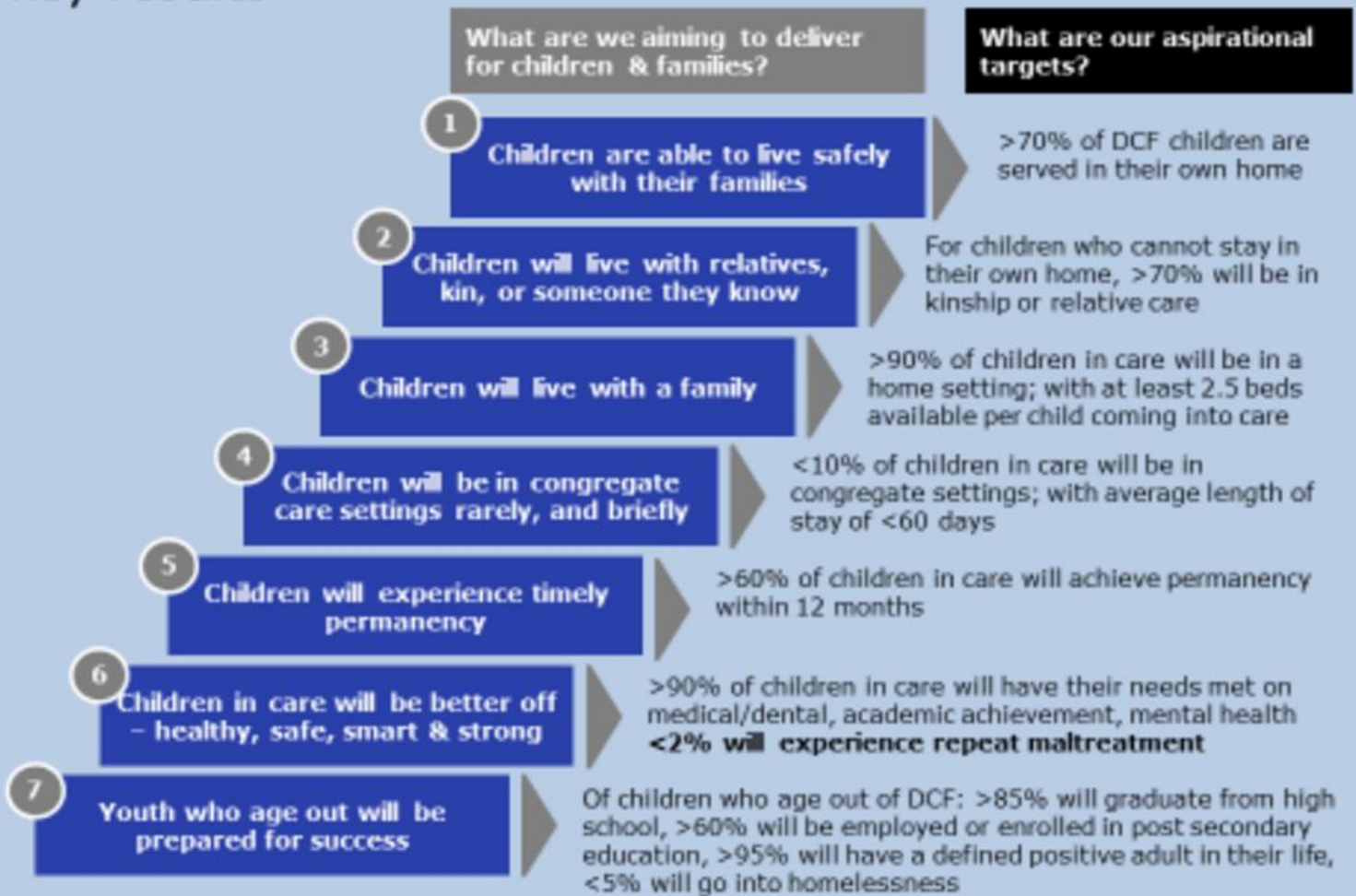


Prepared for:
Juvenile Justice Policy Oversight Council (JJPOC) July 2023

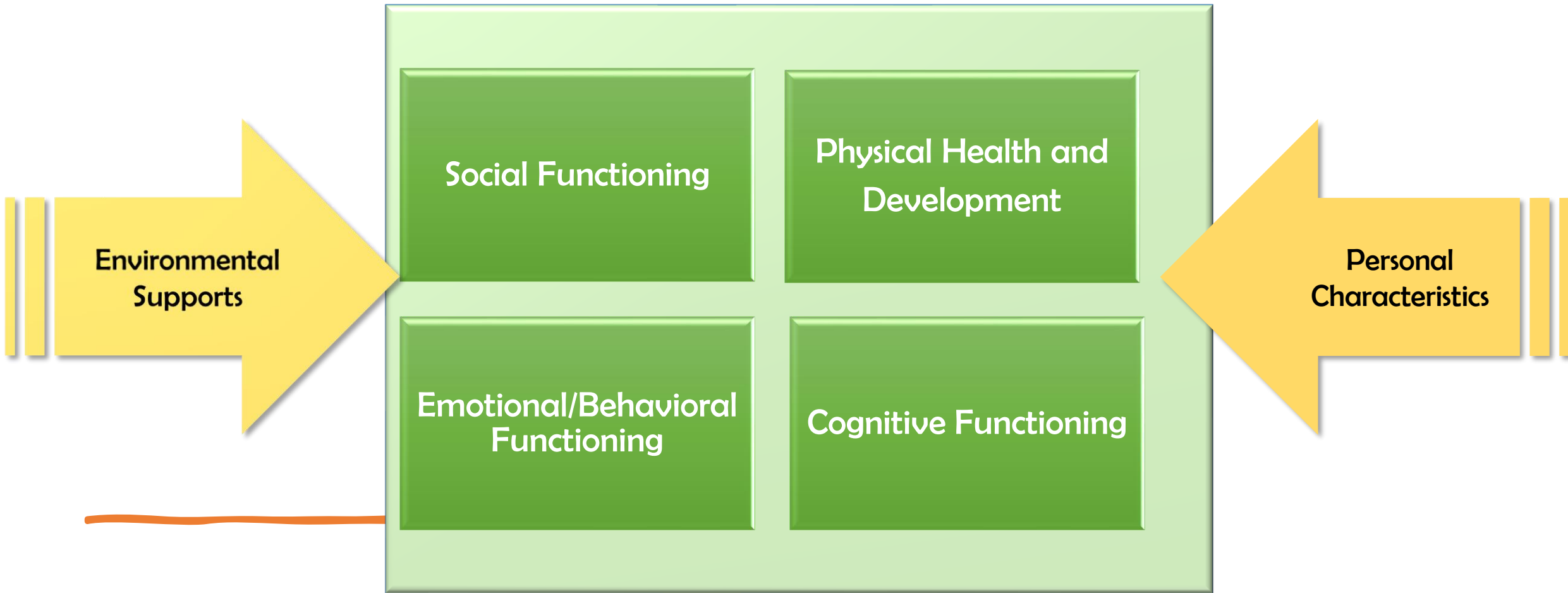
“Partnering with communities and empowering families to raise resilient children who thrive.”



DCF Operations – key results



Tenets of Child Well-Being



Citation:

Samuels, 2012

Intake

24/7 Centralized Call Center:
CARELINE

- Live screeners assess Ab/Neg Reports
- Accept/Non-Accept Determination

14 AREA OFFICES

Intake Social Workers:

- Investigation or
- Family Assessment Response (FAR)

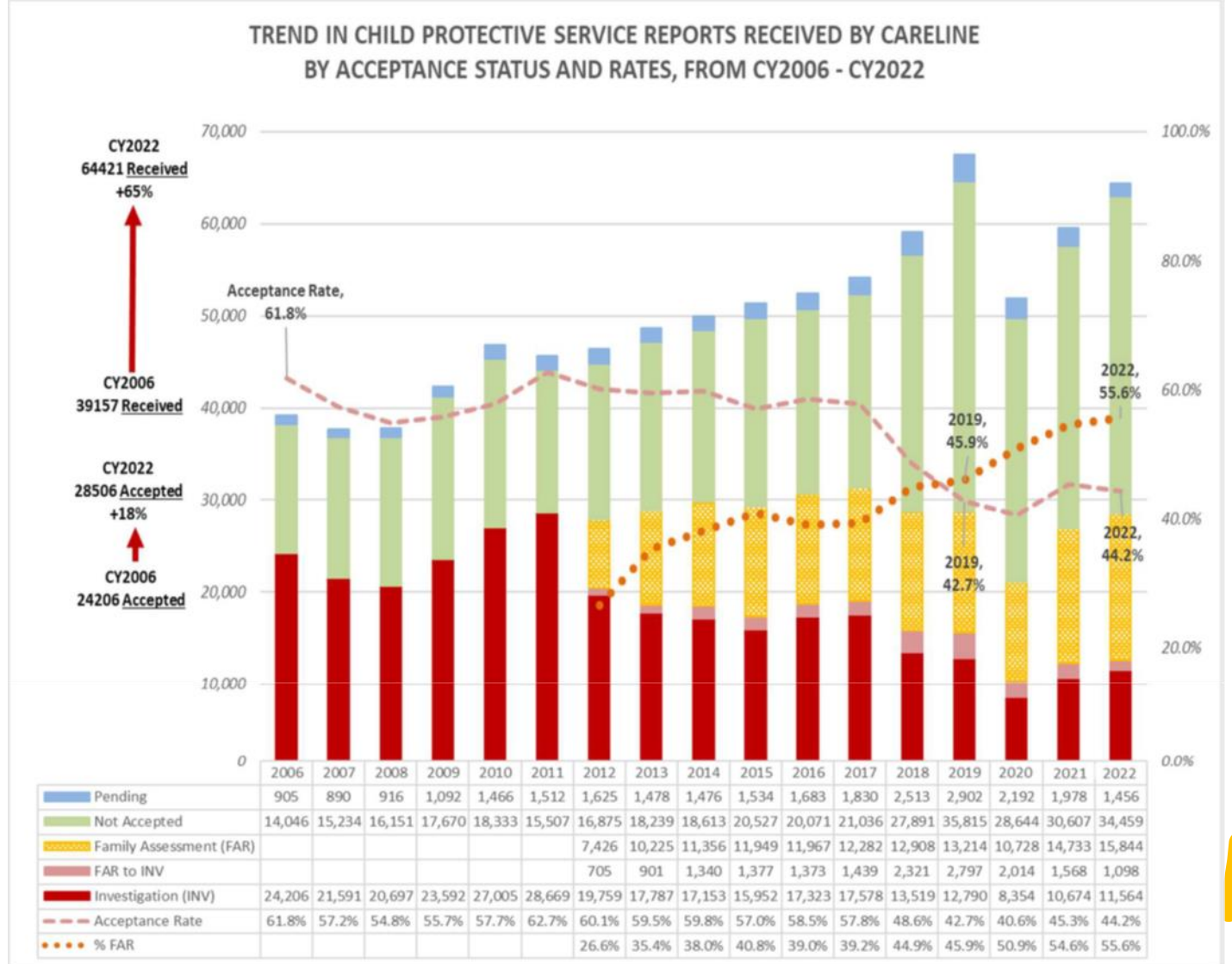
SIU and EPIU

BGCs & Investigations:

- DCF employees,
- School Personnel
- Childcare providers

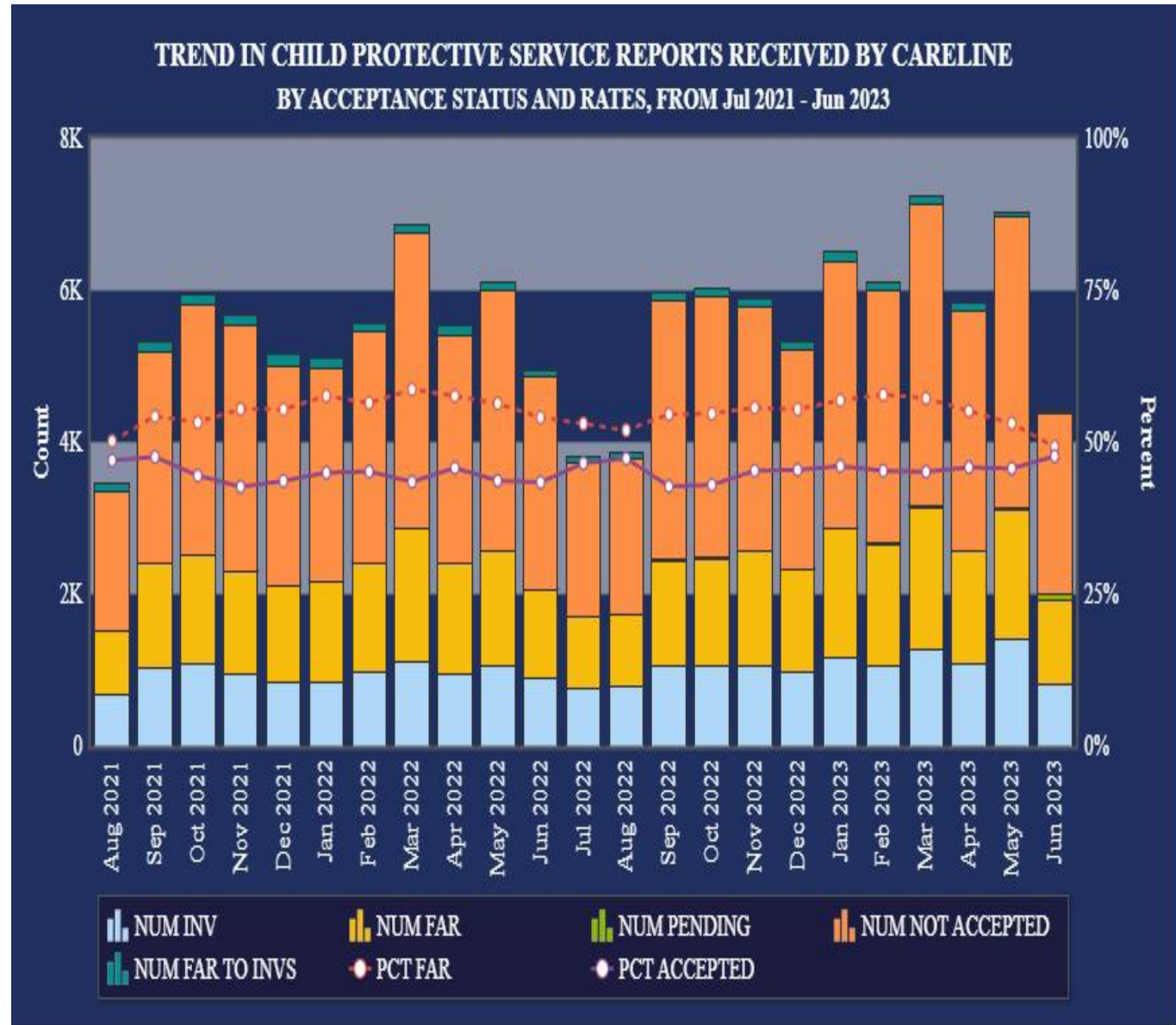
Up to 33 business days to complete Intake with dispositions of:

- Sub close,
- Sub transfer,
- Unsub
- Unsub transfer,
- CSF Referral



Total # of Calls, Reports
% Accepted Reports
(18-month look)

Abuse and Neglect Pathways



Connecticut Safety Practice Model



5 SUPPLEMENTAL PRACTICE GUIDES

- 0-5 Population
- Intimate Partner Violence (IPV)
- Substance Use
- Developmental Disabilities
- Mental Health



ADULT
protective capacity



BEHAVIORS
that are harmful



CHILD
vulnerabilities



DANGEROUS
conditions



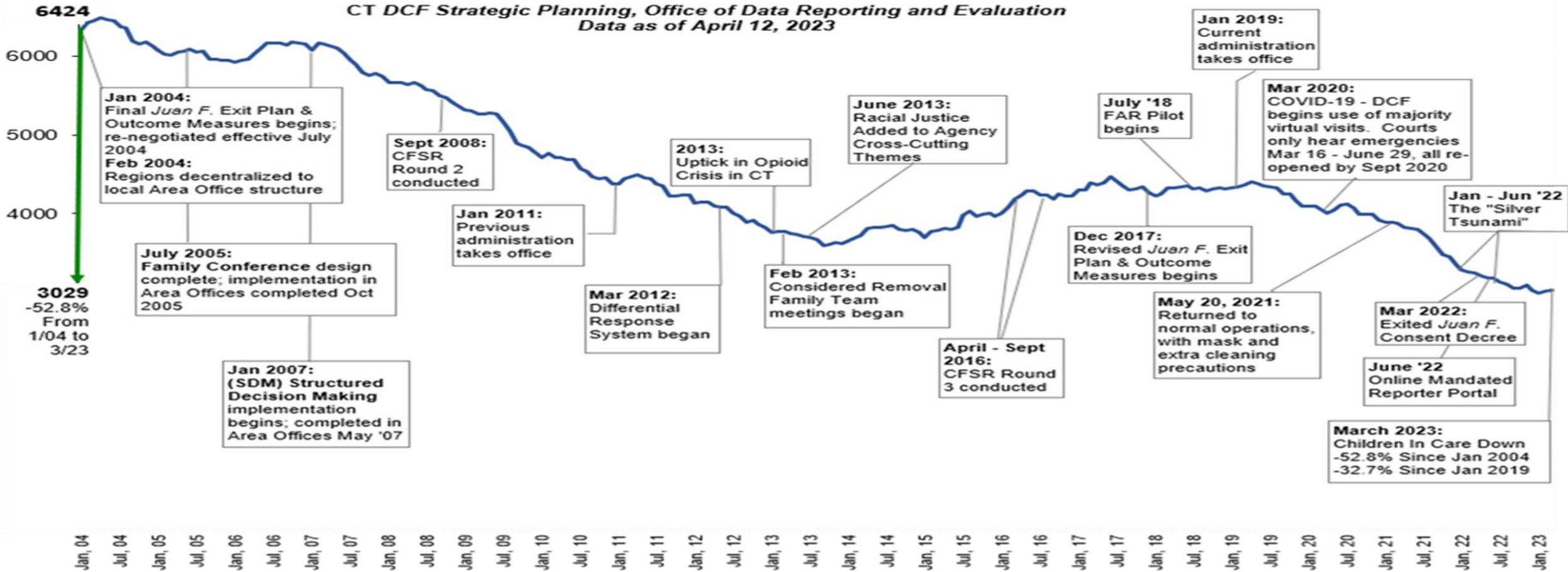
Who is DCF serving ...

DISPARITY INDEX by Race & Ethnicity

STATEWIDE	Race/Ethnicity			
	Hispanic/Latino, Any Race	Black/Af Am, Non- Hispanic	Other* Race, Non- Hispanic	White, Non- Hispanic
CW Pathway Steps				
Total Child Population (2020 US Census)				
Children Reported, FAR (SFY22)	1.7	2.4	1.1	1.0
Children Reported, Investigation (SFY22)	2.1	2.9	1.1	1.0
Children Substantiated as Victims (SFY22)	2.1	2.7	1.1	1.0
Children in Cases Opened for Services (SFY22)	1.9	2.5	1.2	1.0
Children Entering DCF Care (SFY22)	1.9	2.7	1.4	1.0
Children In DCF Care (SFY22)	2.1	3.2	1.1	1.0
Children in Congregate Care (SFY22)	1.8	3.1	1.1	1.0

Number of Children* in DCF Placement On First Day of Each Month January 2004 - March 2023

CT DCF Strategic Planning, Office of Data Reporting and Evaluation
Data as of April 12, 2023



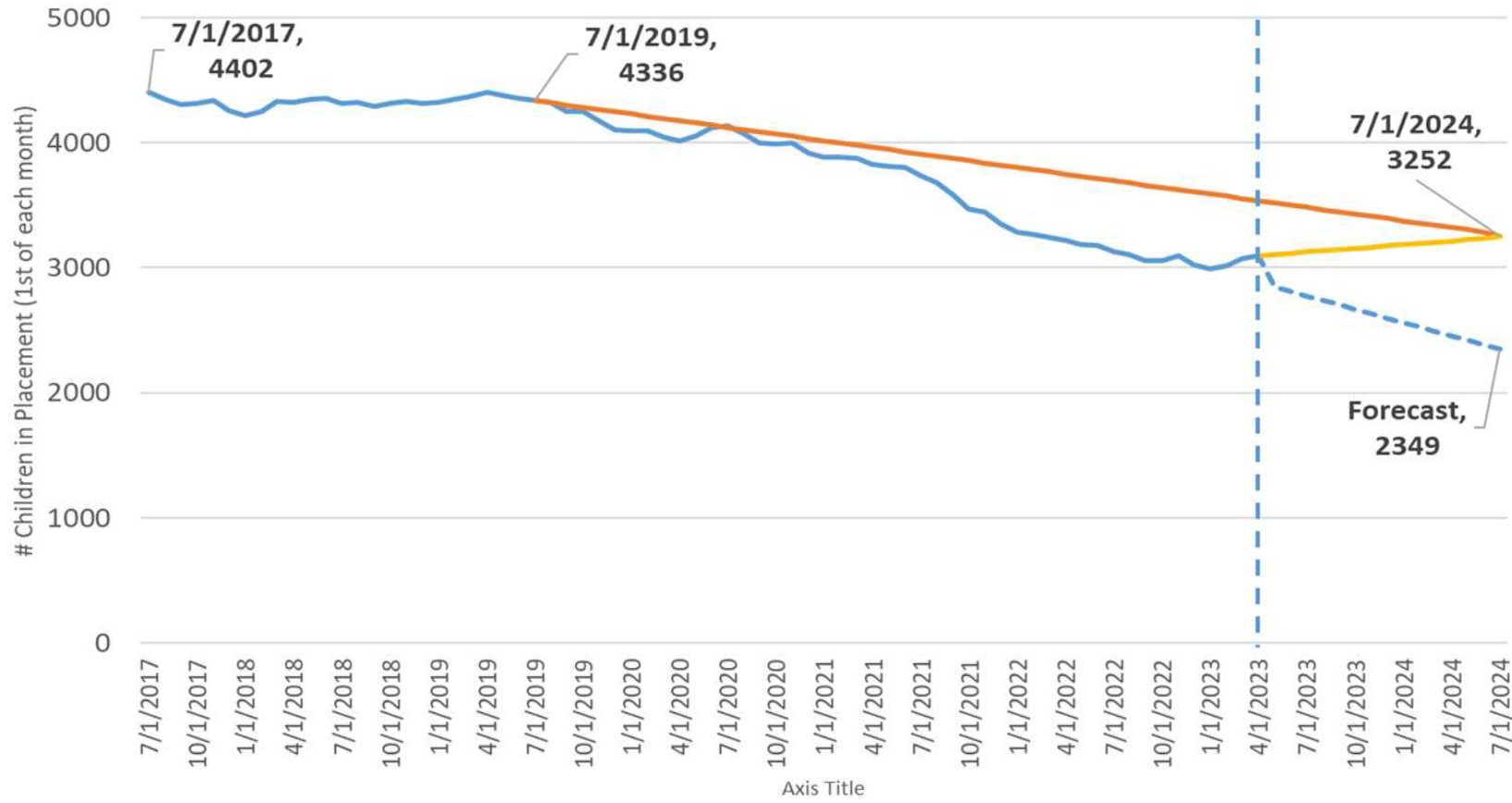
* Includes all children <18 years old in open DCF placements on the first day of each month; Excludes Committed Delinquent, Voluntary, Probate and Interstate Compact. On any given day DCF is responsible for an average of 5.7% additional children who have left open placement, but for which DCF is still legally responsible.



Projected

Children in DCF Placement (CIP) Forecast

Actual thru 4/1/23; Forecast and Goal thru 7/1/24



— Actual Total CIP — CFSP Goal - - - Forecast — Turned Curve



Removal Manner and Age



Number and % of "Removal Types" March 2021 through June 2023					
VOLUNTARY	COURT ORDERED	ADMIN 96-HOUR HOLD	90 DAY VOL PLCMT AGRMNT	UNDETERMINED	TOTALS
25	1647	1273	18	79	3042
1%	54%	42%	1%	3%	100%

Age at Removal (March 2021 through June 2023)				
AGE 0-2	AGE 3-5	AGE 6-12	AGE 13-17	TOTALS
1183	395	741	721	3040
39%	13%	24%	24%	100%

Safety

(Federal) Maltreatment in Foster Care

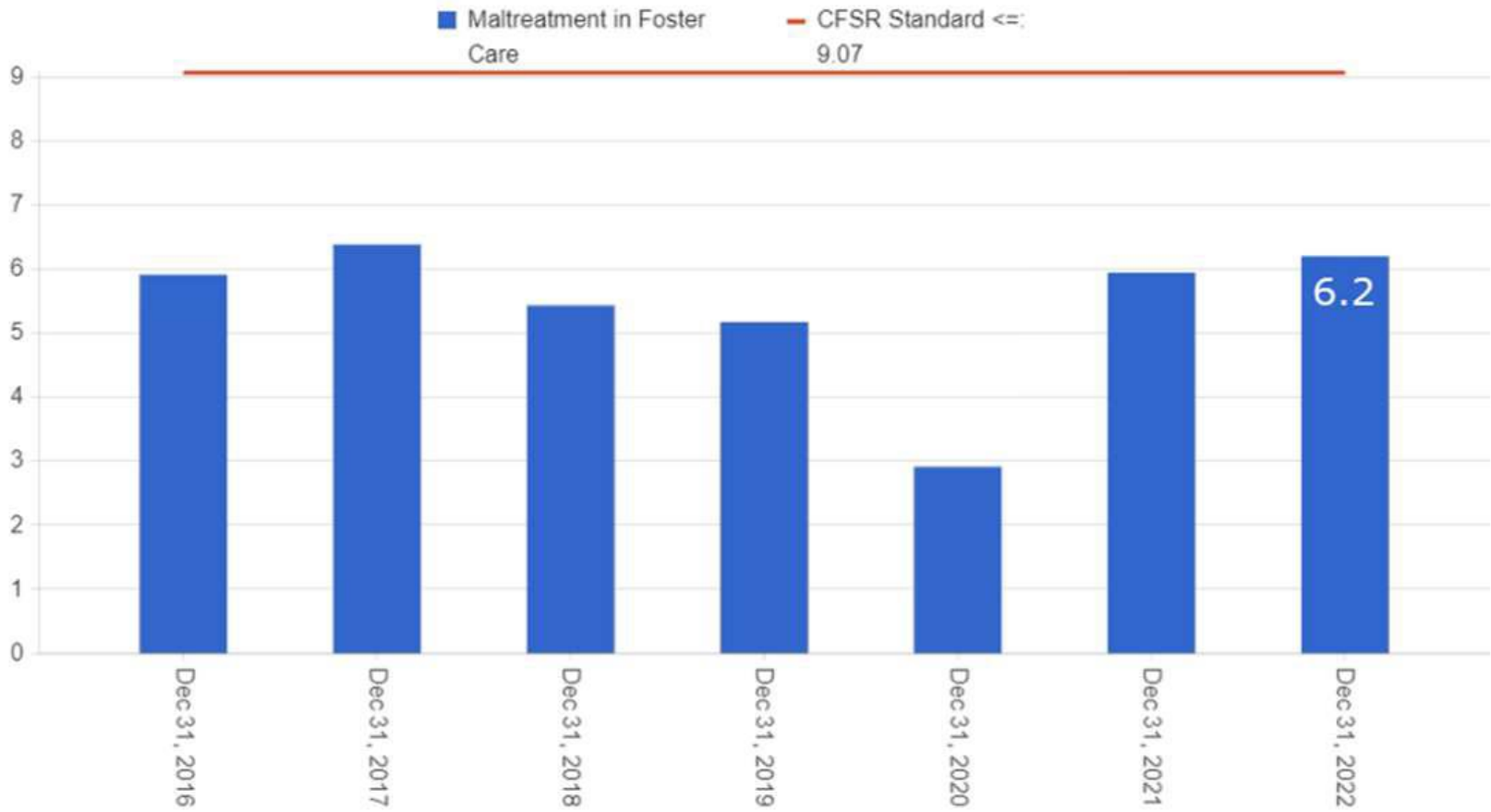
Of all children in foster care during a 12-month target period, what is the rate of victimization per 100,000 days of foster care

Time Period

Calendar Year | Jan 1, 2016 - Dec 1, 2022

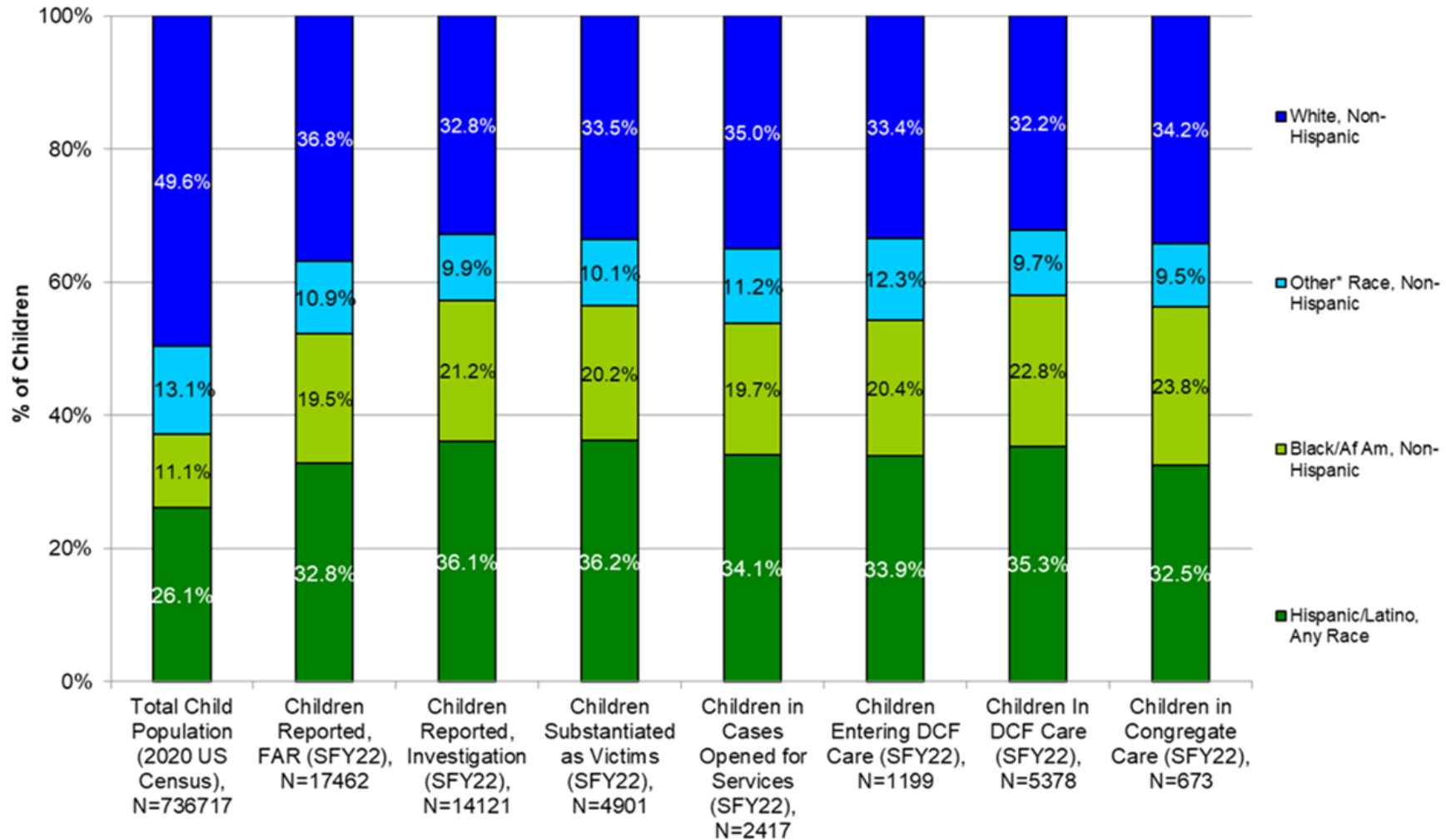
Statewide

None





Racial/Ethnic Disproportionality Across The CT Child Protection System SFY22: STATEWIDE



*Other Race includes: American Indian/Alaskan Native, Asian, Native Hawaiian/Pacific Islander, Other, Multi-Racial, and Missing/Unknown/UTD

Data Run Date: Statewide: 9/26/22

Kids housed in casino hotels? It's a workaround as U.S. sees decline in foster homes
June 14, 2023 5:00 AM ET

NEWS POLK COUNTY

Heartland for Children in critical need of foster homes in Polk County.....Polk County Florida June 21, 2023

CALIFORNIA

'We have no placement for them': L.A. County still keeping troubled youths in hotel rooms...Los Angeles Times June 25, 2023

News

Kansas programs aren't helping every runaway foster kid, so they land in jail cells
KCUR | BY BLAISE MESA

Published June 22, 2023 at 4:00 AM CDT and NPR in Kansas City

Hundreds of Kids in Texas Foster Care Were Still Sleeping in Hotels or Other Unlicensed Placements Last Month

The Imprint Youth & Family News ANNIE
SCIACCA
June 12, 2023

Grace Retreat in need of more foster care parents

The agency says they've seen more kids needing homes this past month...KGUN 9 on your side, Arizona
June 22, 2023

"Effingham County needs foster parents"
Effingham Herald
Effingham County, Georgia
June 29, 2003

The burnout epidemic: High turnover in child welfare University of Hawaii
News » Research » The burnout epidemic: High...June 22, 2023 UH News

Unplaced children sleeping on floor of Kentucky cabinet's Louisville office

Andrew Wolfson
Louisville Courier Journal

demographics 1st DCF entry children 14-17yrs old

*Jan 2022-July 2023

Of the 254 children In Care:

77 (30%) Black
150 (59%) White
17 (7%) Multi-Race
10 (4%) Declined



254 children

entered via OTC

47 (19%) Foster Care

11 (4%) FFT/TFC

43 (17%) Kinship

20 (8%) Congregate Care

10 (2%) Kinship Care

126 (49%) Male

128 (51%) Female

A Qualitative Record Review of 59 of the 254 cases (23%):

19 (32%) of 59 youth committed to **DCF** via OTC -JJ/Delinquency

21 (35%) of 59 youth committed to **DCF** via OTC due to Abuse/Neglect

17 (29%) of 59 youth committed to **DCF** in psychiatric facility or ED

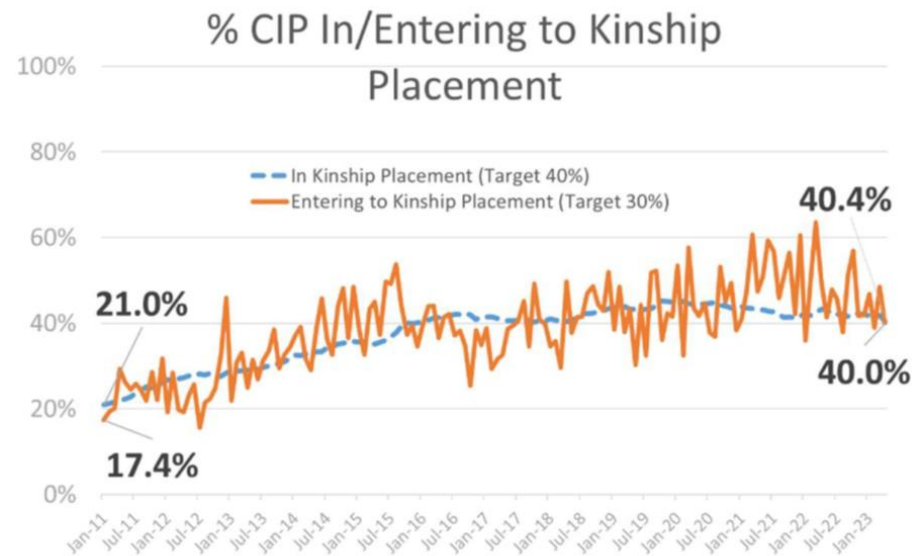
2 (3%) of 59 OTC were due to undocumented unaccompanied minor status

Kinship Practice

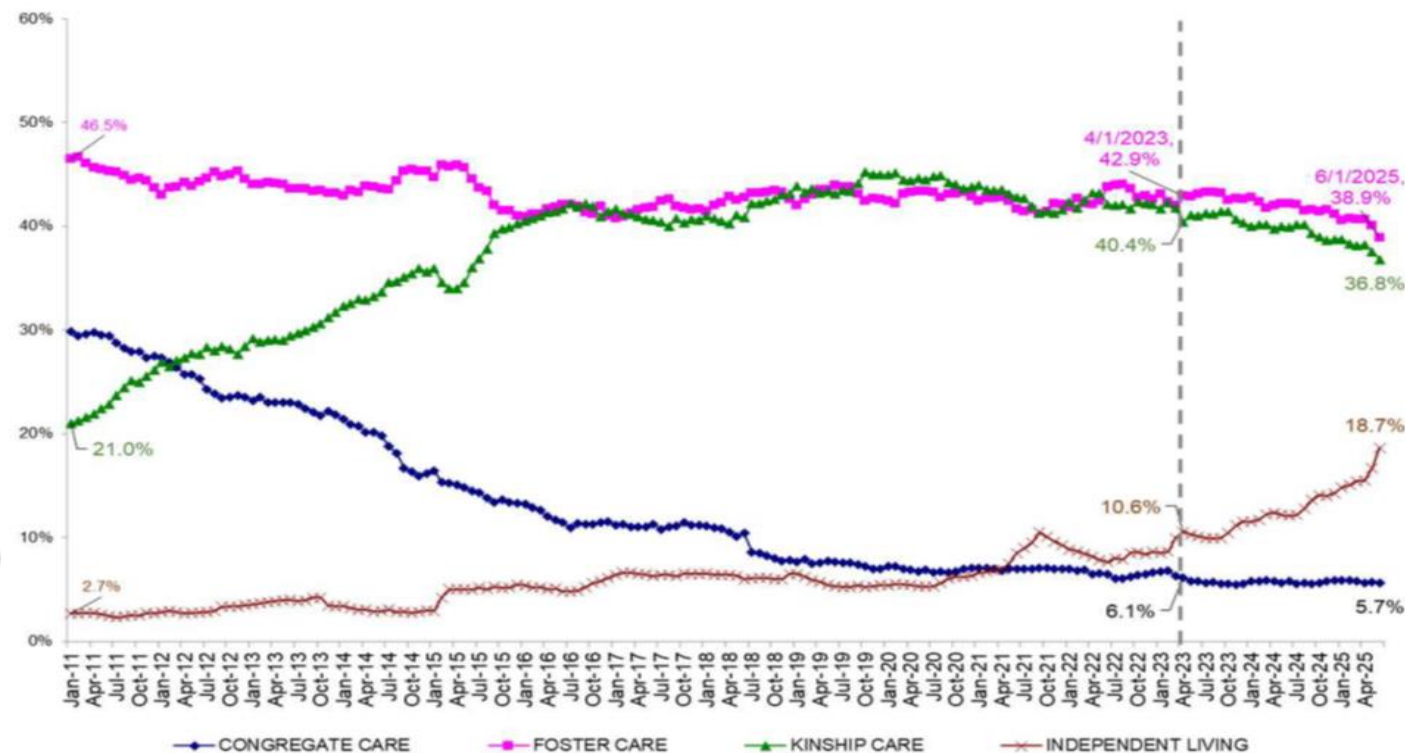
KEY RESULT: If children are unsafe at home and need to be separated from their family, they will live with a relative or someone they know.

Core elements of Connecticut's Caregiver Practice Model for Kin:

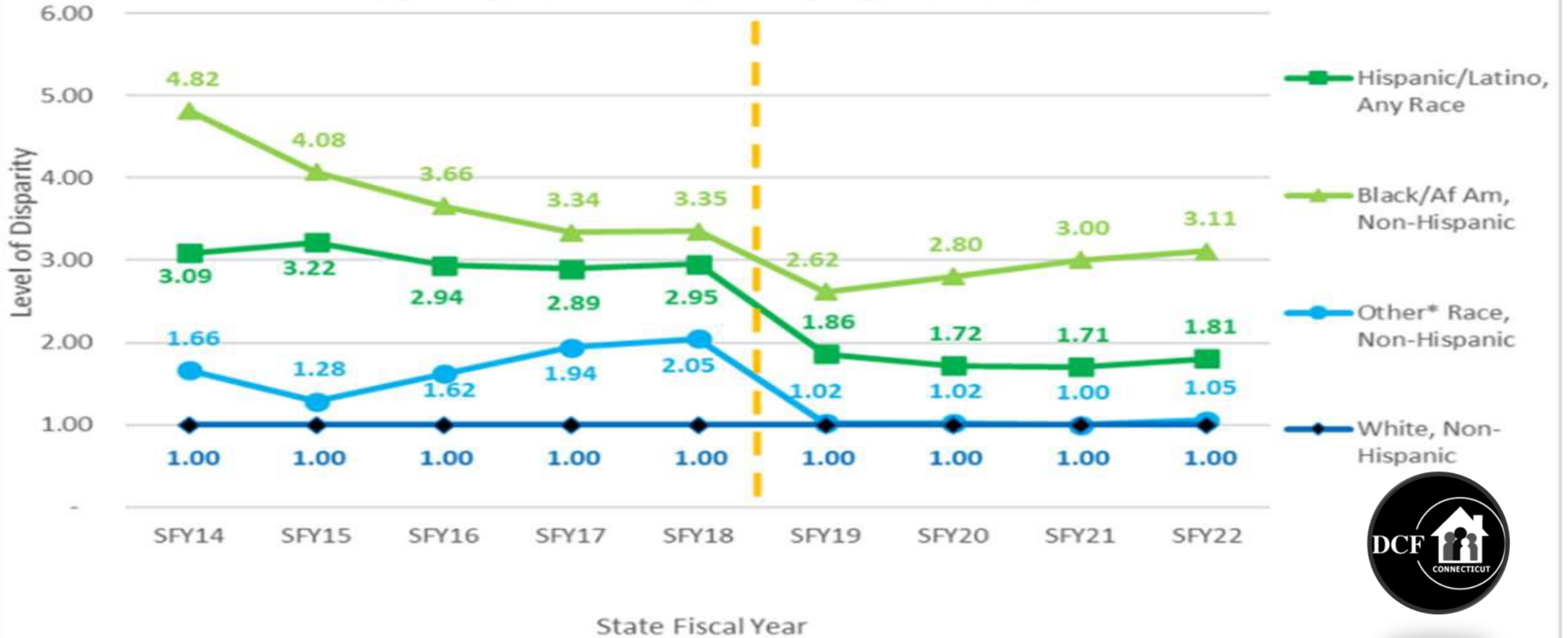
- Child and Family Considered Removal Teaming
- Kinship Firewall
- Diligent Search and Engagement of Kin
- Kinship Navigation Program
- Revised Subsidized Transfer of Guardianship



Trend in the Percentage of Children in DCF Placement by Placement Type: Observed Data January 2011 Through April 2023; Forecasted Data Through June 2025



Disparity-Children in Congregate Care



*Other Race includes: American Indian/Alaskan Native, Asian, Native Hawaiian/Pacific Islander, Other, Multi-Racial, and Missing/Unknown/UTD

Data Run Date: 9/26/22

<https://www.thinkof-us.org/case-studies/away-from-home>

<https://www.pbs.org/newshour/show/poor-kids-often-end-up-in-foster-care-this-program-aims-to-help-poor-families-stay-united>

demographics of youth in foster care

Of the 3,073 children In Care:

- 1,268 are 13+ years old
- 727 are 13-18 years old
 - 228 Kinship Care
 - 129 Group Care
 - 370 Foster Care
 - 227 Therapeutic FC (FFT)
- 167(23%) Black
- 265(36%)Hispanic
- 229(31%) White
- 66 (9%) *other



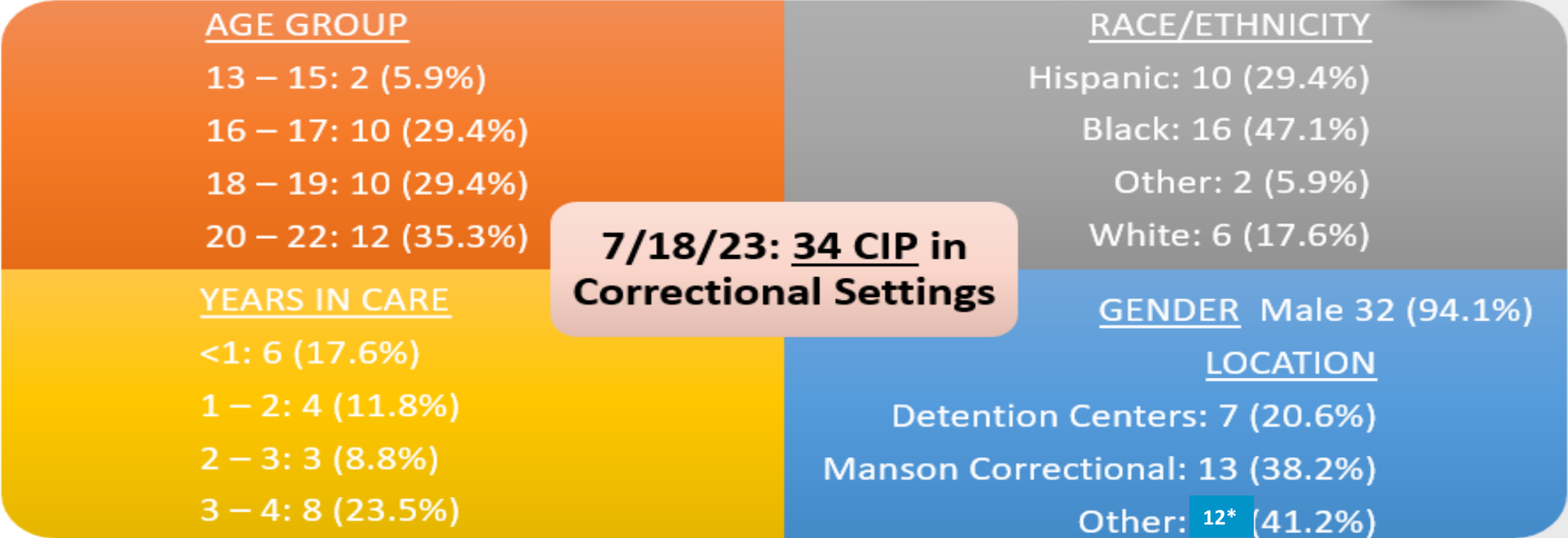
541 are > 18years old (<24):

330 (57%) Foster Care	171(32%) Black
63 (12%) Group Care	160(30%) Hispanic
105 (29%)CHAP/Independent living	164(31%) White
10 (2%) Kinship Care	46(8%) *other

From FY20-FY23 48 of 82 youth transitioned from DCF to DDS early or on time
early means that the youth was placed in a DDS home, however, DCF continues to be the lead and funds the placement until the youth turns **21**

**Other = AI, AAPI, multi-race or unk*

DCF children in placement in a correctional setting (7/18/23* point in time)



4: 13 (38.2%)

- Other contextual facts:**
- *There are 2 females in York CCI
 - *There are 11 kids with a length of stay >4yrs
 - *There have been 43 arrests in 7 months in group care

Well-Being

Total Number of Permanency Plans Approved **3579** FY22

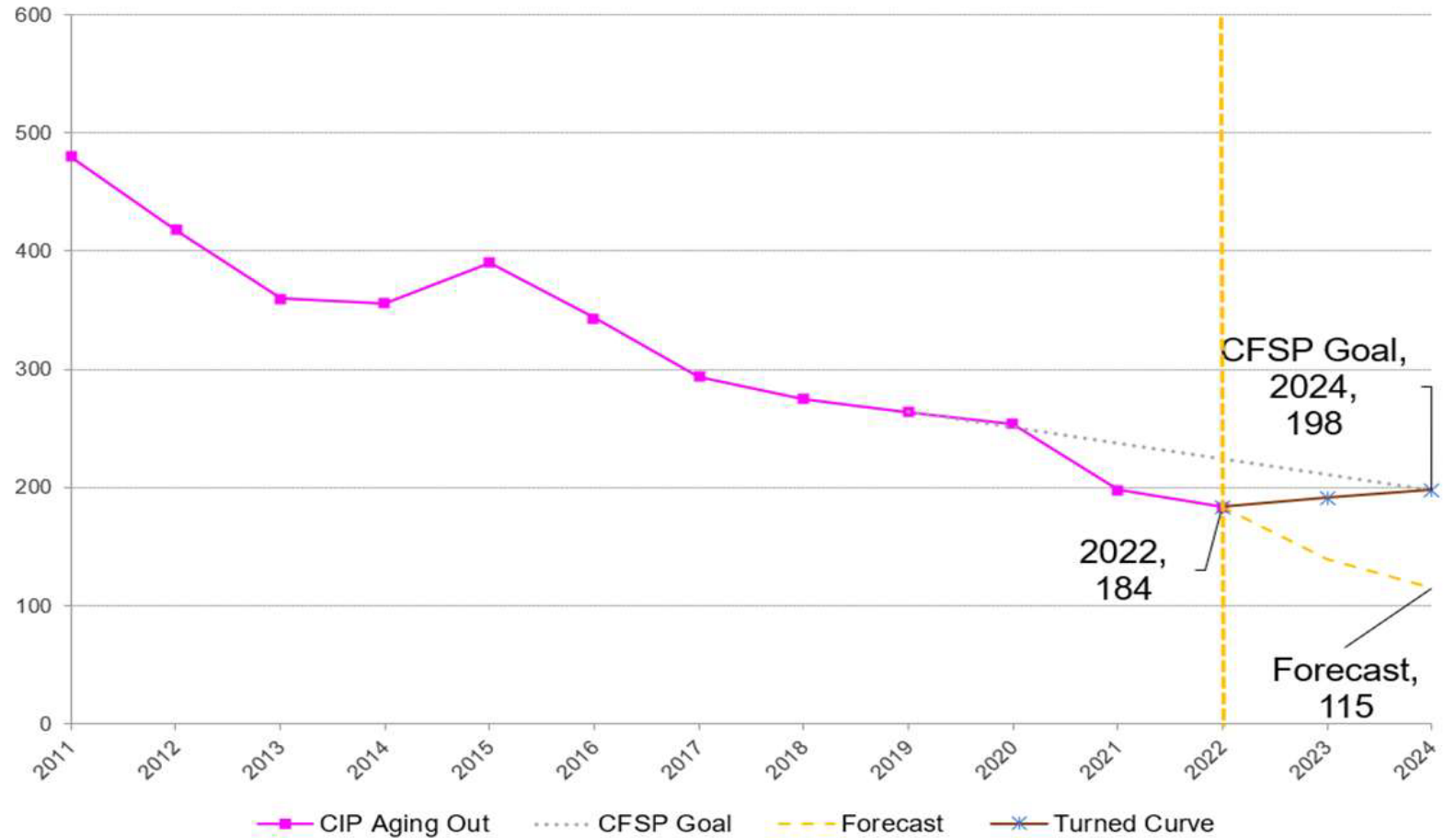
Number of APPLA/OPPLA Plans Approved **697** FY22

Number of Independent Living Plans Approved **214** FY22

Number of Long-Term Foster Care Approved **417** FY22

Number of *Other* Approved **64**

Number of Children Aging Out of DCF Care



Educational Data

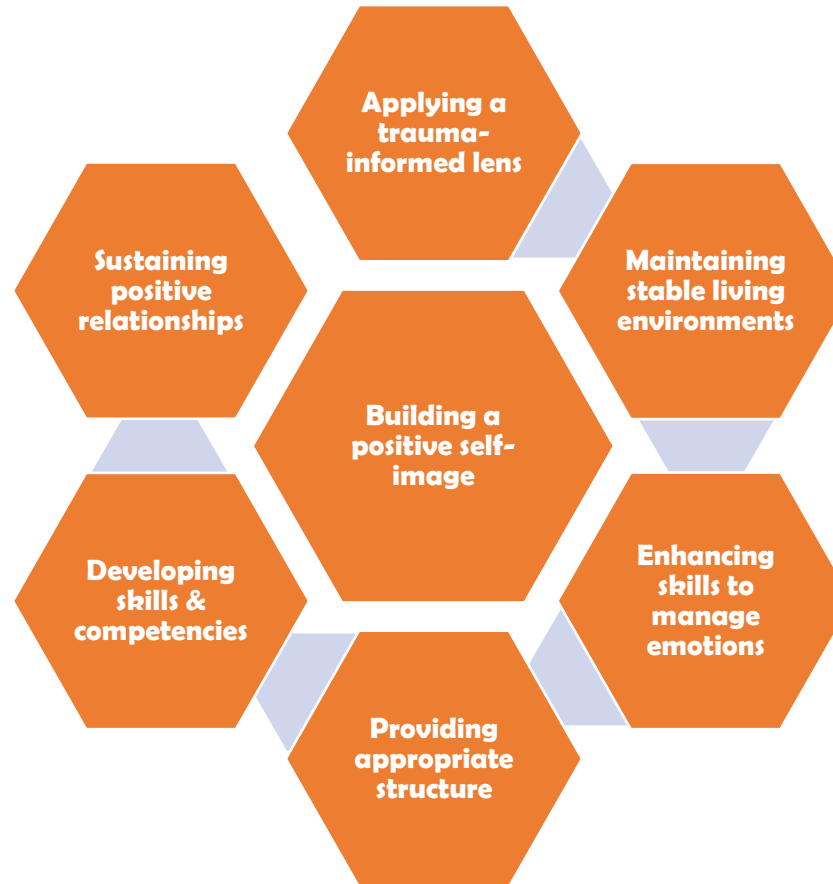


Agency	Test	Number of Scored Tests	Meets or exceeds (score of ≥ 3 or 4)	Does Not meet or approaching Expectations (score of ≤ 1 or 2)
CSDE	ELA	220491	49.10%	50.90%
DCF	ELA	630	17.4%	83.60%
CSDE	MATH	219466	40.0%	60%
DCF	MATH	620	10%	90%

- The educational data is significantly limited in that it is only provided for children in out of home placements with specific legal statuses who are also under the age of 18.
- DCF does not currently receive truancy data from the CSDE.
- Since the pandemic, changes to attendance reporting policies lead to monthly attendance shared directly with DCF by CSDE. This raw data has been used to identify chronic absenteeism patterns. However, the reports are not a truly reliable data source to make long term assumptions.

Strengthening well-being by:

belonging



<https://portal.ct.gov/-/media/DCF/Adolescents/VITAL-Policies/10.pdf>

**Strengthening
well-being by:**



A Robust Behavioral Health System



<https://portal.ct.gov/-/media/DCF/Adolescents/VITAL-Policies/2-10.pdf>

Strengthening well-being of **specialty** populations of adolescents & efforts underway

<https://portal.ct.gov/DCF/Adolescent-Services/VITAL/VITAL-POLICIES>



QUESTIONS



DEPUTY COMMISSIONER

MICHAEL.WILLIAMS@CT.GOV

ADMINISTRATOR OF TRANSITIONAL
SUPPORTS & SUCCESS

LINDA.DIXON@CT.GOV

CHIEF ADMINSTRATOR OF
GOV'T AFFAIRS & POLICY

VINCENT.RUSSO@CT.GOV